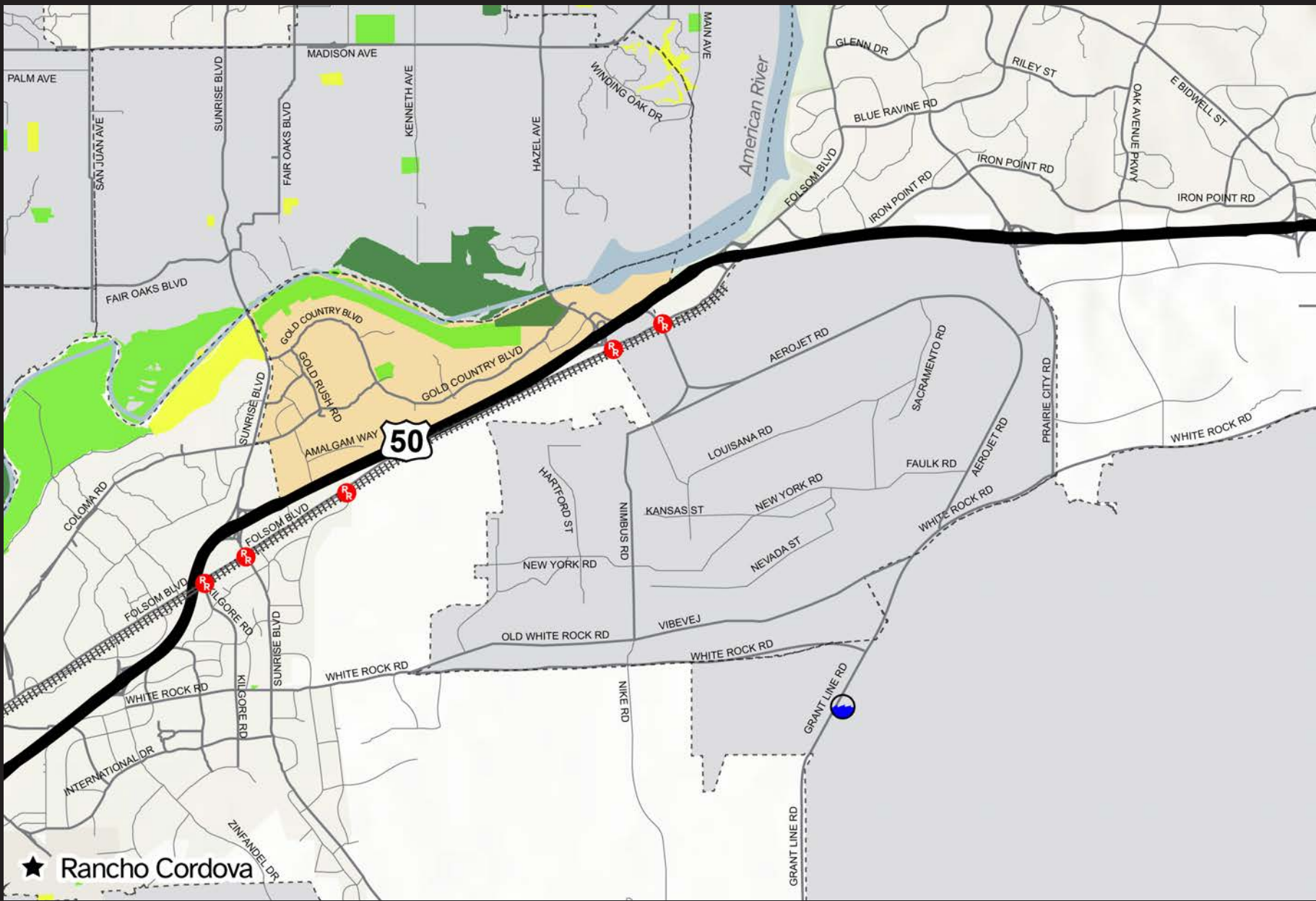


Gold River Know two ways out.



★ Rancho Cordova



Livestock Evacuation Zone Map

Mapped Zones are intended for planning and not all-inclusive of every potential hazard. Familiarize yourself with major routes out of your neighborhood in case of a wildfire evacuation.

- Potential Staging Areas:**
- Recommended
 - Likely
 - Potential
-
- Map Zone
 - Airport
 - Weight Limit
 - Rough Road
 - Rail Crossing
 - Dip in Road
 - No Turnaround
 - Floodprone
 - Traffic Bottlenecks

Scan to download digital copies of these maps!



Scan to sign up for emergency alerts



Quick Evacuation

Livestock Evacuation Checklist



Prepare for Evacuation:

- Have a clear defensible space around barns, pastures and property
- Plan ahead and have several evacuation routes in mind
- Contact your local fairgrounds, stockyards, equestrian centers, friends, etc. about their policies and ability to take livestock
- If you don't have your own truck and trailer, make arrangements before disaster strikes
- Make sure your neighbors have your contact numbers
- Have vaccination/medical records, registration papers and photographs of your animals (proof of ownership) and your Disaster Preparedness Kit.
- If you must leave your animals, leave them in a preselected, cleared area. Leave enough hay and water for 48 to 72 hours.
- Do not wait until the last**

During Evacuation - What to Take and Do:

1. Review your Evacuation Plan Checklist
2. Ensure your Emergency Supply Kit is in your vehicles
3. Cover-up to protect against heat and flying embers
4. Locate your livestock and take them with you



Prepare - Livestock Disaster Preparedness Kit:

- Hay and feed
- Ensure destination has adequate water
- Buckets for feed and water
- Animal harnesses (non-nylon)
- Wire cutters and a sharp knife
- Equipment (e.g., hoof pick, leg wraps, blankets, shovel)
- Medical supplies (first aid kit, vaccination/dosing documentation, medications)
- Plastic trash barrel with a lid
- Cleaning supplies
- Portable radio, flashlights, extra batteries, phone charger



During Evacuation - Leave:

- Leave as soon as evacuation is recommended by fire officials
- Officials will determine the areas to be evacuated and escape routes to use
- Law enforcement agencies are typically responsible for enforcing evacuation orders
- You will be advised of potential evacuations as early as possible
- You may be directed to temporary evacuation points to await transfer to a safe location



Find and Share Info

Receive Alerts

- Register** at www.Sacramento-Alert.org for notifications
- Visit** www.sacoes.org
- Follow** @SacramentoOES on Twitter
- Follow** [SacramentoOES](https://www.facebook.com/SacramentoOES) on Facebook
- Change** your outgoing voicemail to callers trying to see if you are ok
- Post** your status on social media
- Register** with Red Cross Safe and Well



The County of Sacramento is committed to improving access to information and services to individuals with disabilities.

Disability Compliance Office
Department of Personnel Services
9310 Tech Center Drive
Sacramento, CA 95826

Phone: (916) 874-7642

CA Relay Service 711

Fax: (916) 874-7132

Email: dco@saccounty.gov
<https://personnel.saccounty.gov/Pages/DCOCountyProgramAccessInformation.aspx>



Website: sacramento-ready.org

Radio: KFBK 1530am, KSTE 650am, CapRadio 90.9fm

Twitter: @SacCountyCA and @SacramentoOES

Facebook: @SacramentoCounty and @SacramentoOES