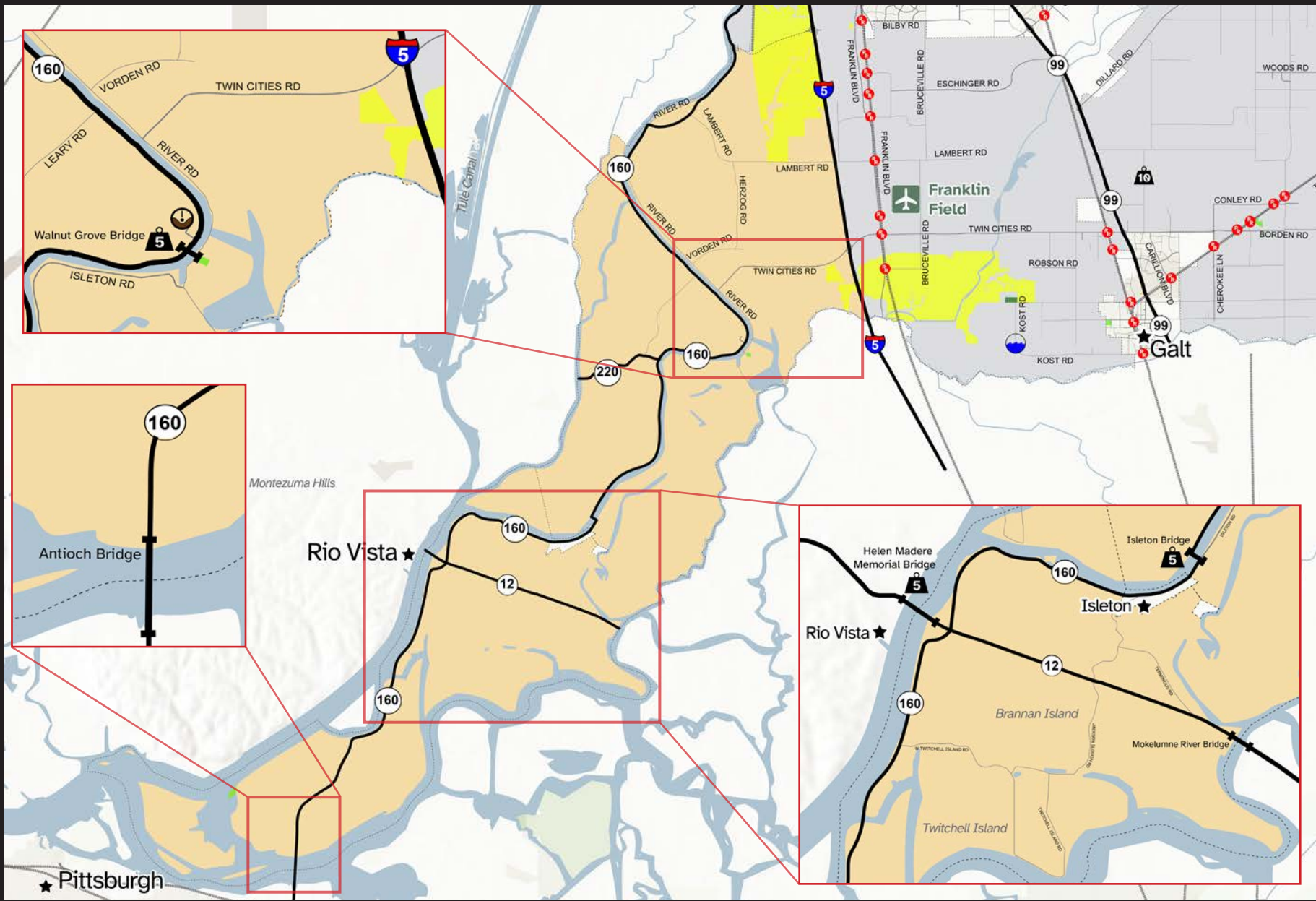


# Delta Know two ways out.



- Potential Staging Areas:**
- Recommended
  - Likely
  - Potential
- 
- Map Zone
  - Airport
  - Weight Limit
  - Rough Road
  - Rail Crossing
  - Dip in Road
  - No Turnaround
  - Floodprone
  - Traffic Bottlenecks

Scan to download digital copies of these maps!



Scan to sign up for emergency alerts



# Quick Evacuation

## Livestock Evacuation Checklist



### Prepare for Evacuation:

- Have a clear defensible space around barns, pastures and property
- Plan ahead and have several evacuation routes in mind
- Contact your local fairgrounds, stockyards, equestrian centers, friends, etc. about their policies and ability to take livestock
- If you don't have your own truck and trailer, make arrangements before disaster strikes
- Make sure your neighbors have your contact numbers
- Have vaccination/medical records, registration papers and photographs of your animals (proof of ownership) and your Disaster Preparedness Kit.
- If you must leave your animals, leave them in a preselected, cleared area. Leave enough hay and water for 48 to 72 hours.
- Do not wait until the last**

### During Evacuation - What to Take and Do:

1. Review your Evacuation Plan Checklist
2. Ensure your Emergency Supply Kit is in your vehicles
3. Cover-up to protect against heat and flying embers
4. Locate your livestock and take them with you

### Prepare - Livestock Disaster Preparedness Kit:

- Hay and feed
- Ensure destination has adequate water
- Buckets for feed and water
- Animal harnesses (non-nylon)
- Wire cutters and a sharp knife
- Equipment (e.g., hoof pick, leg wraps, blankets, shovel)
- Medical supplies (first aid kit, vaccination/dosing documentation, medications)
- Plastic trash barrel with a lid
- Cleaning supplies
- Portable radio, flashlights, extra batteries, phone charger



### During Evacuation - Leave:

- Leave as soon as evacuation is recommended by fire officials
- Officials will determine the areas to be evacuated and escape routes to use
- Law enforcement agencies are typically responsible for enforcing evacuation orders
- You will be advised of potential evacuations as early as possible
- You may be directed to temporary evacuation points to await transfer to a safe location

### Find and Share Info

#### Receive Alerts

- Register** at [www.Sacramento-Alert.org](http://www.Sacramento-Alert.org) for notifications
- Visit** [www.sacoes.org](http://www.sacoes.org)
- Follow** @SacramentoOES on Twitter
- Follow** SacramentoOES on Facebook
- Change** your outgoing voicemail to callers trying to see if you are ok
- Post** your status on social media
- Register** with Red Cross Safe and Well



**The County of Sacramento is committed to improving access to information and services to individuals with disabilities.**

Disability Compliance Office  
Department of Personnel Services  
9310 Tech Center Drive  
Sacramento, CA 95826

**Phone:** (916) 874-7642

**CA Relay Service** 711

**Fax:** (916) 874-7132

**Email:** [dco@saccounty.gov](mailto:dco@saccounty.gov)  
<https://personnel.saccounty.gov/Pages/DCOCountyProgramAccessInformation.aspx>



**Website:** [sacramento-ready.org](http://sacramento-ready.org)

**Radio:** KFBK 1530am, KSTE 650am, CapRadio 90.9fm

**Twitter:** @SacCountyCA and @SacramentoOES

**Facebook:** @SacramentoCounty and @SacramentoOES